

25  
reasons  
WE'RE  
HERE  
FOR  
GOOD.







## Reason: to sustain Evanston.

# 1

Twenty-five years ago this fall, our foundation was established for the good of Evanston and in the spirit of one community. The voices and many hopes of the founders echo in the work we do today and in the reasons we're here.

We're here to ensure resources for the future of Evanston, and to better the lives of residents today.

We're here to meet emerging needs, and to respond quickly. We're here to address long-standing problems with new approaches.

We're here to find ways to work together across the lines of our differences, to make this an ever better place for all who call Evanston home.

We're here so those who love Evanston can leave a legacy to the community that has nurtured them and their families.

We're here because the founding mothers and fathers recognized the need for new types of organizations, and we're here to support established *and* new organizations in increasing their impact.

We're here so that when residents face a challenge, Evanston will have what it takes to overcome it—and the resources to seize an opportunity before the moment passes.

We're here, in short, because the future does not take care of itself.

And we're here for the next 24 reasons we're going to share with you, our supporters.

*Penelope Sachs*

*Sara Schastok*

Penelope Sachs, Board Chair

Sara Schastok, President and CEO

7 grants

9 funds

10 financials

12 donors

16 leadership

# 2

Reason:

This incredibly diverse community is made of countless overlapping circles of individuals and institutions. The Evanston Community Foundation is the hub, connecting far edges to make a better place for everyone.

**for the common good.**



**"We started the Foundation** because we had a vision about what kind of community Evanston could be," says Claire McCarthy Peterson, a founding board member, "and we wanted to try new ideas for helping the community over the long term."

In 1989, Peterson herself brought the foundation one such new idea: enabling Evanston residents with mental illness to secure decent housing with supportive services in the community.

Working with the Mental Health Association, she and others started Housing Options for the Mentally Ill in Evanston. They used a \$2,500 Foundation startup

# 3

Reason:  
**to launch great ventures.**

grant for a fundraising consultant. The grant demonstrated community support that in turn attracted other funders and helped start Housing Options on the path to its current healthy mix of government, individual, and foundation funding.

Today, says executive director Debbie Bretag, 85 people live in Housing Options' apartments and small buildings around Evanston. Some stay for years, others just long enough to get their lives on track. Supportive services help them set goals and follow through; housing keeps them stable and out of the ER or the police station, saving the community money.

"When the foundation gave us that grant," says Peterson, "it said this is part of what we envisage for Evanston—a community that welcomes and supports all its citizens, including those with a mental illness." Adds Bretag, "Ultimately, their lives are richer, and the community benefits from diverse participation."



Claire McCarthy Peterson

Debbie Bretag



# 4

The **achievement gap** has troubled our schools for years. Under a challenge from the Grand Victoria Foundation's Communityworks initiative, we convened Evanston residents seeking solutions. "Every child ready for kindergarten, Every youth ready for work" became our mantra. We started at the very beginning—ages zero to three—because today's little ones are tomorrow's teens and emerging workforce. We decided to help vulnerable families give their babies a strong start on life and learning.



## Reason: to give all our kids a strong start.

### And so...

- We started funding District 65 Family Center and Infant Welfare Society of Evanston to do **home visits with fifty families** every year
- Bringing toys, books, **tips on early learning**, and a sympathetic ear
- They come back weekly or bi-weekly for the child's **first three years**
- Parents say the visits help reduce stress and **teach vital parenting skills** — *plus*
- Home visitors arrange **screenings** for about 160 children each year, to spot health and developmental problems that can hold kids back
- We put other pieces in place too, like **connecting families** through the Family Room,
- Or Evanston Public Library's play-literacy workshops that **build pre-reading skills**
- We're moving along with our "home visiting kids" as they grow by funding **scholarships to Warren Cherry Preschool**
- And meanwhile **we're looking for answers**: why do 90 kids come to kindergarten each year with no formal early childhood education? **How can we help?**
- We've **pulled together local residents** determined to make sure all our kids get a strong start in life, and
- We've **invested \$883,000** in these strategies in just five years,
- Still other grants support related projects by the Childcare Network of Evanston, Jumpstart for Young Children—and Evanston Symphony Orchestra. Our work benefits from theirs
- We've steered the conversation on Evanston's achievement gap toward kindergarten readiness, inspiring more organizations to jump in
- **180 donors** have helped build an endowment now approaching \$6 million for *Every child, Every youth*.
- Which enables us to **help organizations** weather economic troubles and state funding crises, and keep doing great work for young children
- Who are **so important for our community's future**.



Vidette Bullock Mixon  
Class of 2009

Diep Nguyen  
Class of 2011

Peter Braithwaite  
Class of 2000

## 5 Reason: to rise to the challenge.

**We did it!** In 2008, the Grand Victoria Foundation put \$2 million in matching funds on the table. They challenged Evanston to build an endowment for ECF's *Every child ready for kindergarten, Every youth ready for work* initiative. An anonymous \$1 million gift got us off to a flying start. 180 donors later, on the September 30, 2011 deadline, we made the match and didn't miss a penny of this historic opportunity. Visit [evanstonforever.org](http://evanstonforever.org) for the latest.

## 6 Reason: to nurture new leaders.

**Strong communities need strong leadership.** And not just from the 'usual suspects.' The visionaries who started the Foundation saw a future where leaders from diverse Evanston communities worked together. They created Leadership Evanston to make that happen. Twenty years later, over 500 people have been through the signature program — 77% of whom still live and/or work here. Together they are a deep reservoir of active, committed leaders for Evanston.

People like **Aracely Canchola**, a founder of the Evanston Coalition for Latino Resources, who credits Leadership Evanston with helping her develop organizational skills and confidence to engage Evanston's growing Latino population. **Or Diep Nguyen**, Assistant Superintendent at ETHS, who found Leadership Evanston invaluable for helping her, as a newcomer, learn about the community. "You get firsthand information from people serving in [leadership] capacities. You put a face with the name, see how people are linked with each other and do business with each other — that's very valuable." **Or Carolyn Dellutri**, Executive Director of Downtown Evanston, who calls Leadership Evanston "life changing: it grounded me, and gave me resources and connections."

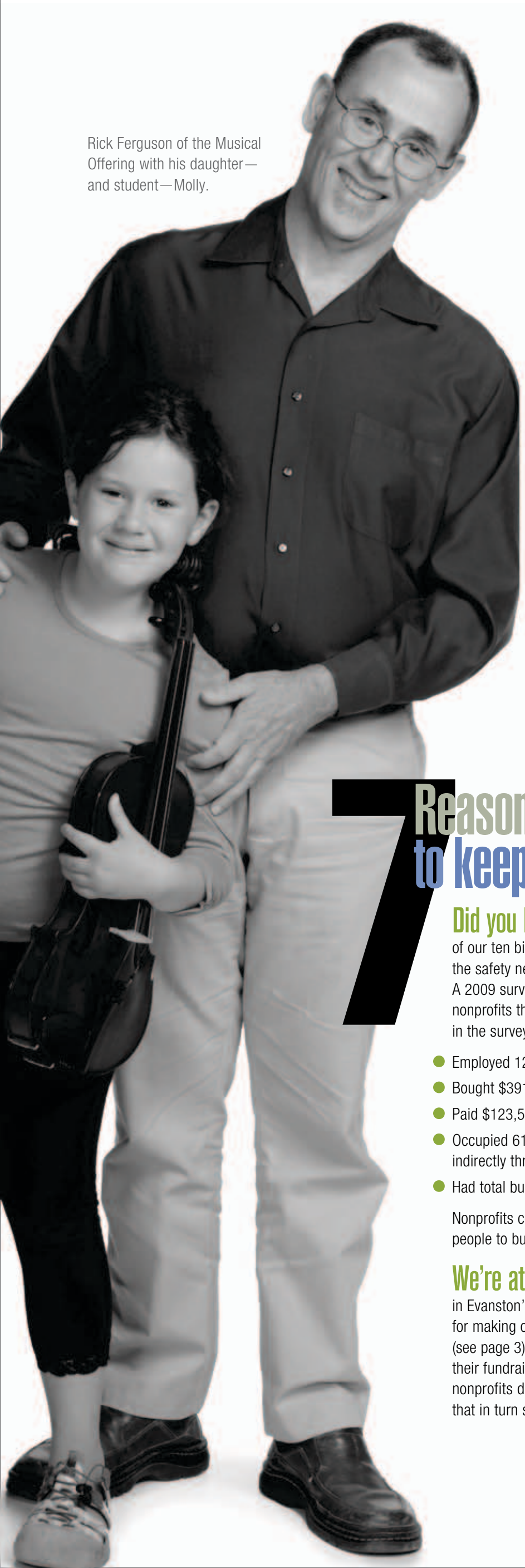
Leadership Evanston participants tour neighborhoods, visit social service agencies, and hear firsthand from public officials about the challenges Evanston faces. They hone skills like visioning, creative problem solving, and responsible advocacy.

**Making a difference.** They also tackle projects with concrete outcomes — like the West End Market and the Downtown Evanston Gift Card that encourages support of local businesses.

Our alumni are school district leaders, aldermen, and local officials, like the superintendent of Streets and Sanitation. They run local nonprofits and work together on grassroots efforts such as Grandmother Park. Spinoff programs include Encore Leadership for retirees, a one-day "Snapshot Evanston," and the Public Service Challenge to encourage people to get involved in local elections.

Leadership Evanston broadens and deepens the connections that make our community run. Community volunteer **Jessica Jolly** marveled at being in a room with "people whose ages, economic background, race, political affiliation and interests differed significantly, ... truly exchanging ideas and viewpoints." "There are more people walking in other people's shoes," says **Margaret Gergen** of the North Shore Retirement Hotel. "You learn to hear — really listen to — other people's voices." Together, participants learn "we are all agents of change," says Dellutri. "What we learned we will apply in the community."





Rick Ferguson of the Musical Offering with his daughter— and student—Molly.

## 7 Reason: to keep our economic heart beating.

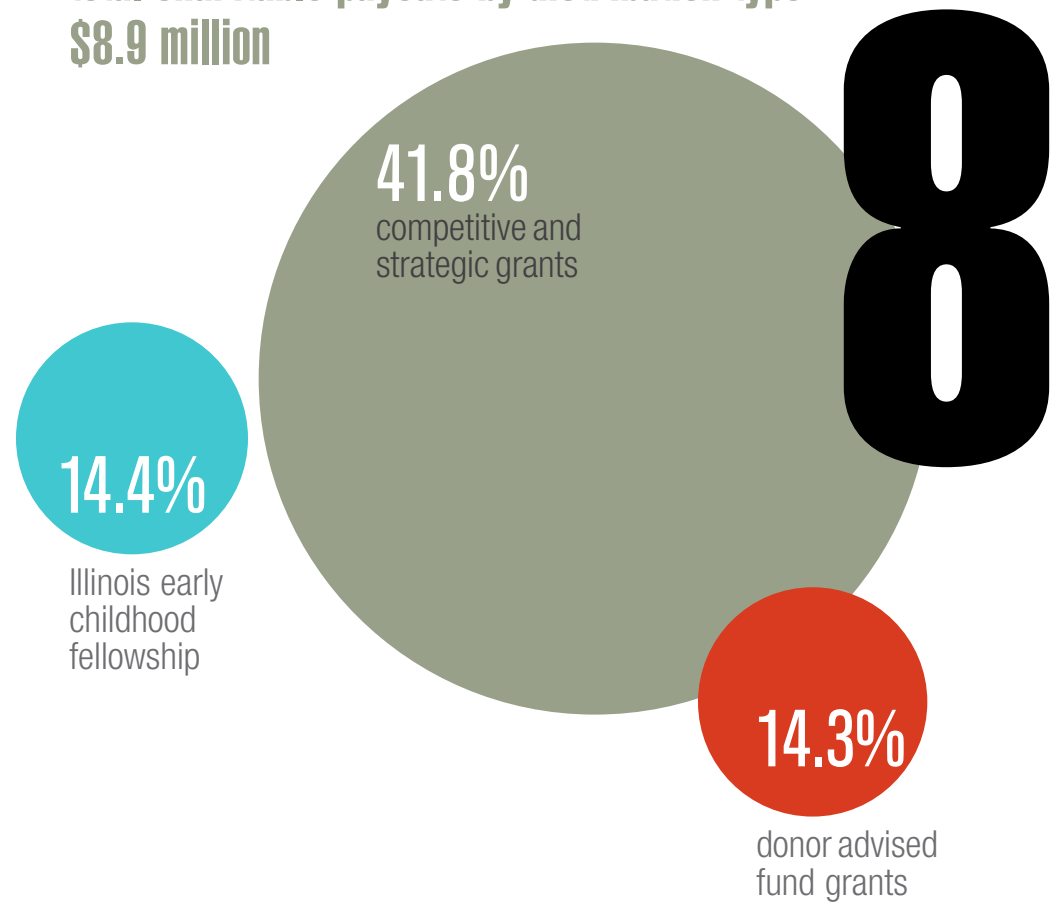
**Did you know** that nonprofits account for over half the jobs in Evanston? Or that eight of our ten biggest employers are in the nonprofit or public sectors? Nonprofits don't just provide the safety net of our community—economically speaking they are woven into its fabric. A 2009 survey by Evanston Inventure that we helped produce found that even smaller nonprofits that don't own property have a significant impact. Twenty-seven of them participated in the survey and reported that they:

- Employed 120 people full-time and 79 part-time, with payroll of \$6.7 million
- Bought \$391,700 in local goods and services, from office supplies to pizza
- Paid \$123,535 in city fees
- Occupied 61,000 square feet of commercial space, through which they paid property taxes indirectly through rent
- Had total budgets of \$13.9 million

Nonprofits contribute mightily to civic, cultural, and economic life in Evanston. They help attract people to buy homes and start businesses here.

**We're at the heart of all this.** We foster accountability, sustainability, and efficiency in Evanston's nonprofits. Our grants support their work. We convene them to share ideas for making our community stronger. Nonprofit leaders build skills through Leadership Evanston (see page 3) and our nonprofit workshops. Through *root2fruit* (opposite page) they strengthen their fundraising, build stronger boards, and plan for the future. Our work helps Evanston's nonprofits deliver on their missions, invest more in local needs, and hire more people—and that in turn strengthens our local economy.

total charitable payouts by distribution type  
\$8.9 million



14.7% other fund distributions and scholarships

14.9% endowment draws for operations

## Reason: to distribute philanthropic dollars.

The Foundation's 62 funds hold resources for many different purposes. Whether supporting the Foundation's grantmaking or operations, the initiatives of other organizations, or meeting donors' interests, ECF makes things happen.

## 9 Reason: to empower organizations.

**Just because you've got a great idea**

—like planting community gardens, or keeping teens engaged and out of trouble — doesn't mean you can pull it off. Nuts-and-bolts problems can dim the brightest dreams: Budgeting. Fundraising. Finding space. Planning for the future.

That's where *root2fruit* comes in.

Three Evanston organizations are inducted into *root2fruit* each year (a total of 30 so far). Each is awarded a \$10,000 grant, renewable for two more years. The program teaches them how to build strong boards and how to tell their stories to win support, clients, and funds. The grant allows them to invest, as all successful businesses must, in technology and other essentials.

"The money really helped with startup costs," says Lou Dickson, who, along with her board, recently launched Evanston Rebuilding Warehouse. Their goal is to reuse and recycle materials from renovations or deconstruction, keeping them out of landfills and providing an affordable source for Evanston homeowners to keep their properties in good repair. Also valuable, says Dickson, a former contractor, is learning from other nonprofits and experts about board development, fund-raising, and governance. "Making a nonprofit work is a brand new experience for me," she says. "Having someone to guide me made this incredibly alluring."

Older organizations have turned to *root2fruit* at critical times in their organizational growth. Evanston Community Defender had been helping teens in legal trouble since

the 1970s, but it was "always on the brink of financial crisis, just surviving, never getting legs to stand on," says Naria Santa Lucia. Santa Lucia runs the James B. Moran Center for Youth Advocacy, the renamed and reinvigorated organization that succeeded Community Defender after its participation in *root2fruit*.

"*Root2fruit* really engaged our board," says Santa Lucia, helping them realize they needed an effective governance structure, strategic planning, and fundraising — especially important after city funding was cut.

Today the Moran Center is on a much stronger footing, with a healthy mix of public and private funding. "*Root2fruit* first got that ball rolling; without it we would not have survived the financial crisis," says Santa Lucia. Just as important, it connected Santa Lucia with Jane Doyle, whose Center for Independent Futures helps young people with disabilities plan a future based on their dreams, not their limitations. The same vision could work for delinquent kids, Santa Lucia realized. She worked with Doyle to integrate "life futures planning" into all her cases, helping her young people build a path out of trouble. Recidivism rates, usually upwards of 75%, are just 30% for teens who have been through the program.

### root2fruit 2011

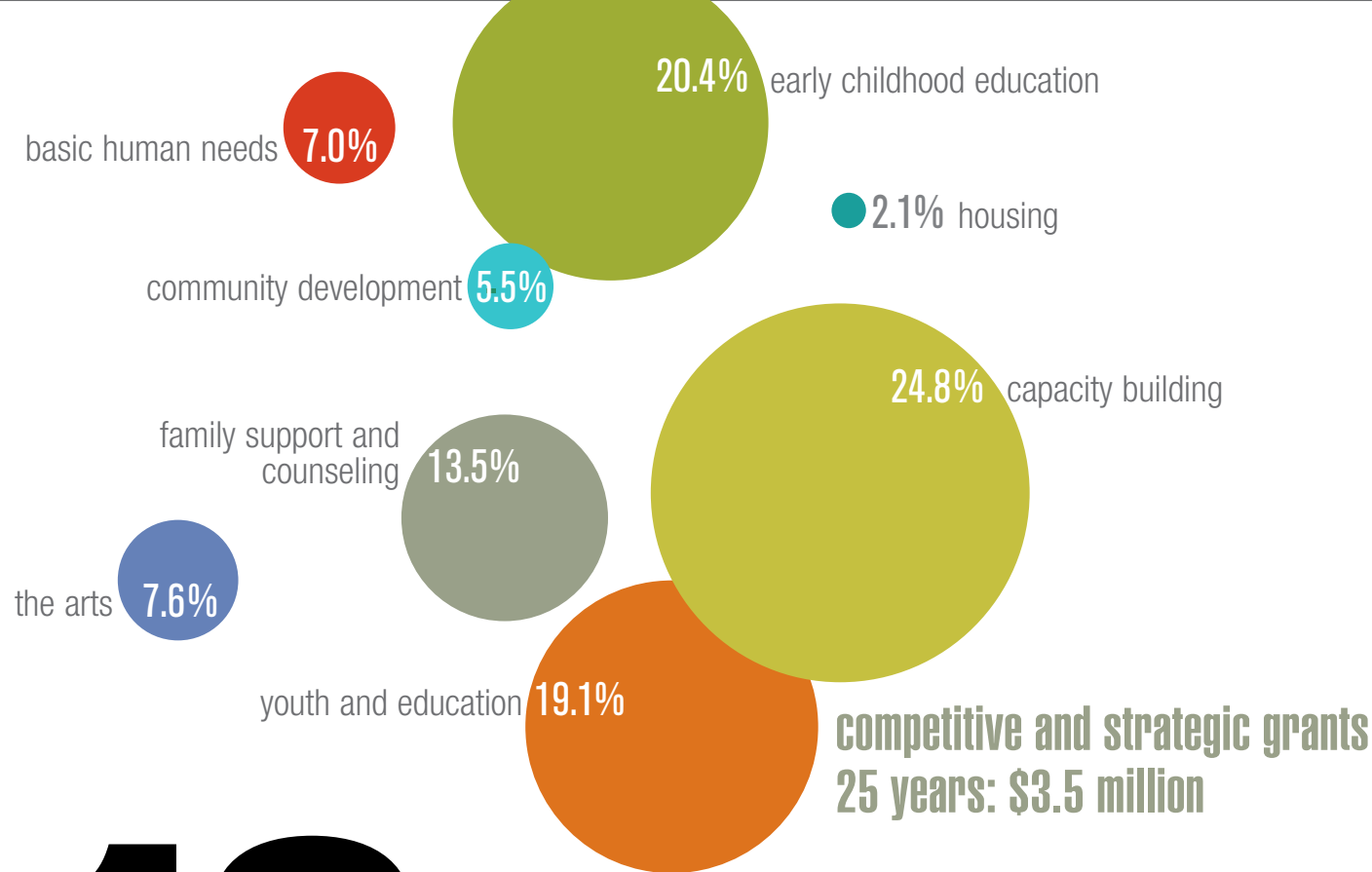
capacity building grants for small organizations: \$90,000

Evanston Coalition For Latino Resources / year 3	\$ 10,000
Evanston Day Nursery / year 1	10,000
Evanston Festival Theatre, Inc. / year 2	10,000
Evanston Rebuilding Warehouse / year 1	10,000
Infant Welfare Society of Evanston / year 2	10,000
LIFT-Evanston / year 2	10,000
PEER Services / year 3	10,000
Percolator Films (Reeltime) / year 3	10,000
The Talking Farm / year 1	10,000

**Extending impact.** The Mammel Foundation of Omaha developed and funds *root2fruit*—an outstanding example of a private foundation using the knowledge and networks of a community foundation to extend the impact of its work. Evaluations show that participants build their internal infrastructure during *root2fruit*, then expand programs in the years immediately afterwards. Most have grown their boards, improved operations, added staff, increased their budgets (by an average of 155%), and — like the Moran Center — broadened their fundraising. They've become more stable and more productive. And that's good for Evanston.







# 11

Resources are hard to come by, so we make grants where we see the promise of long-term impact, and we assess the results.

**Wide-ranging, far-reaching.** Charitably-minded people tend to have a few causes closest to their hearts, though their interests may be much wider-ranging. When the Evanston Community Foundation's annual fund or general endowment is high in your portfolio of giving, you're making a difference far beyond your special focus. Our grantmaking reaches every corner of Evanston.

On the other hand, giving to field-of-interest funds within the Foundation's endowment can expand our ability to focus on your priority area. Evanston's interests are many and we embrace them.

# 12

**Reason: to respond to changing needs.**

With state budget cuts squeezing local nonprofits, ECF launched a special fall 2010 human-needs grant cycle.



Annie Rolls Bates and Kaleigh Rolls, participants in a North Shore Senior Center program

**Reason: to distribute resources.**

2010/11 total grants and distributions: \$1,447,884

**2011 competitive and strategic grants: \$467,467**

See also: *root2fruit* grants, page 5

## communityworks

Every child ready for kindergarten, Every youth ready for work: \$167,960 in strategic grants

Home visiting support services and enrichment activities	
Infant Welfare Society of Evanston Baby Talk	\$ 80,875
Evanston/Skokie District 65 Family Center Parents as Teachers	41,925
The Family Room	3,090
Evanston Public Library	1,850
Professional development for early childhood workers	
Childcare Network of Evanston	3,500
Early childhood systems development	
Home Visit Collaboration, Leadership and Evaluation	25,720
Infant mental health consultancy	
Infant Welfare Society	3,000
Evanston/Skokie District 65 Family Center	3,000
Preschool: Bridge to Kindergarten	
Warren W. Cherry Preschool	5,000

## spring responsive grants

responding to community need, building community assets: \$200,507 to 27 organizations

We are grateful to all our Grantmaking Partners, particularly Dance Marathon, for their gifts that allowed us to fund the full range of grants listed below. See page 15 for our full list of partners. The following board directed funds at the Foundation also support our responsive grants:

All Our Sons Fund	Fund for Women and Girls
Arts in Community Fund	Lydia Martin Memorial Fund
Balkcom Family Fund	Lorraine Hairston Morton Fund for Youth
George Cyrus Memorial Fund	Rees-Servillo Jan Heffernan Memorial Dinner Fund
Evanston Realtors Fund	Sweers Fund for Children and the Arts
The Fund for Evanston	Faith Vilas Fund for Youth

Big Brothers Big Sisters of Metropolitan Chicago	\$ 7,500	
Evanston Community-Based Mentoring Program		
Center for Independent Futures	15,000	
Full Life Futures Program at Evanston Township High School		
Warren W. Cherry Preschool	5,750	
Getting At-Risk Children to the Kindergarten Starting Line Together with Their Peers		
Child Care Center of Evanston	7,082	
Expansion of Preschool Program for Two-Year-Olds		
Childcare Network of Evanston	7,500	
Communitywide Scholarship Fund for Families in Crisis		
Children's Home + Aid	6,000	
Rice Child + Family Center: Evanston Foster Care Outreach Project		
Communityworks:	16,000	
Additional grant for Every Child Ready for Kindergarten		
Every Youth Ready for Work*		
Family Support through Home Visiting		
*Funds were distributed to partner organizations through our Communityworks grants listed at left.		
Connections	13,750	
Next Steps Top 20 Project with most at-risk homeless		
Erie Family Health Center, Inc.	13,500	
Erie Evanston Health Center: Community Health Education and Outreach		
Evanston History Center	5,000	
150th Anniversary Project Coordinator		
Evanston In-School Music Association (EISMA)	3,000	
Concerts for Kids		
Evanston School Children's Clothing Association	3,000	
Purchase of Children's Footwear		
Evanston/Skokie School D65 School Age Child Care	1,280	
Creative Dance at Oakton		
Evanston Symphony Orchestra	3,000	
Music in Your World preschool program		
The Family Room	10,000	
New Mothers Support Programs		
Grandmother Park Initiative	3,800	
Community Outreach		
The Harbour, Inc.	5,000	
Safe Harbour Emergency Shelter for young women		
Jumpstart for Young Children, Inc.	7,780	
Book Buddies Pre-K Program		
James B. Moran Center for Youth Advocacy	5,000	
Ask a Lawyer free clinic program		
LIFT-Evanston	8,000	
Online Social Service Directory		
Northlight Theatre	5,150	
Northlight On Campus — Speak Up! at Evanston Township High School		
North Shore Senior Center	5,600	
Outreach to Identify and Provide Support to Older Adults with Vision Loss		
Open Studio Project	5,200	
Video Art and the Process		
PEER Services, Inc.	7,200	
Reducing the Spread of HIV Through Support and Risk-Reduction Education		
Rebuilding Together North Suburban Chicago	5,000	
Home Repair Services		
Youth Job Center	8,150	
WILL: Women Invested in Learning and Livelihoods		
Y.O.U. (Youth Organizations Umbrella)	8,265	
Service Learning for Y.O.U.th		
YWCA Evanston/North Shore	9,000	
Job-Readiness and Economic Life Skills Coaching		
<b>fall responsive grants-NEW</b>		
grants targeted to social service agencies impacted by the recent lack of state funding: 25,000		
Connections	\$ 2,500	
Resource Development Expansion		
Family Focus	2,500	
Pregnant and Parenting Teens program		
North Shore Senior Center	2,500	
Grandparents raising Grandchildren support program		
Rimland Services NFP	2,500	
Pre-Vocational program for autistic adults		
Trilogy, Inc.	5,000	
Outreach Services to Evanston's homeless		
Y.O.U. (Youth Organizations Umbrella)	5,000	
Reinforcing Teen REACH after-school and summer programs		
YWCA Evanston/North Shore	5,000	
Community-Based Counseling for women affected by domestic abuse		
<b>2011 foundation initiatives</b>		
<b>programs &amp; operations: \$141,327</b>		
support from:		
Mr. and Mrs. Carlye Anderson Fund		
Communityworks Fund		
Fund for Evanston		
Foundation Fund		
Jim Kogen Foundation Spirit Fund		
Gene Lavengood Fund		
Leadership Fund		
<b>other initiatives: \$653,340</b>		
Acorn Fund Imagination Grants for King Lab Elementary School	\$ 300	
All Our Sons Fund to Y.O.U. (Youth Organizations Umbrella)	400	
Safe Summer Summit		
Illinois Early Childhood Fellowship	652,640	
The Foundation is the fiscal sponsor for this three-year special project to advance leadership development in the early childhood field. See page 15 for the list of corporate and private foundation funders.		
<b>donor-advised funds</b>		
<b>2010 grants: \$154,142</b>		
Grants recommended by donor advisors and approved by the Foundation board		
<b>grants to Evanston area service organizations: \$98,326</b>		
Connections	\$ 2,050	
Evanston Community Foundation (ECF)	20,688	
ECF Grantmaking Partners Program	22,138	
ECF Leadership Evanston	1,000	
Family Room	1,000	
Hands of Peace	3,600	
Housing Options	500	
Interfaith Action of Evanston	1,000	
Jewish Reconstructionist Congregation	1,250	
The Land Connection Foundation	2,000	
McGaw YMCA	1,000	
Mitchell Museum of the American Indian	500	
James B. Moran Center for Youth Advocacy	1,000	
Next Theatre Company	14,500	
Northlight Theatre Inc	250	
Nurture	1,500	
Open Studio Project	1,000	
Percolator Films	500	
St. Athanasius Roman Catholic Church	3,000	
Temple Beth Israel - Torah Fund	2,000	
Turning Point Behavioral Health Care Center	500	
Youth Organizations Umbrella	1,250	
Youth Job Center of Evanston Inc.	1,000	
YWCA Evanston/North Shore	15,100	
<b>grants to metropolitan Chicago organizations: \$7,950</b>		
<b>grants to organizations outside our area: \$47,866</b>		
<b>2011 distributions from designated and agency funds</b>		
<b>scholarships &amp; awards: \$17,615</b>		
Beatty Family Scholarships at ETHS:	\$ 3,000	
3 scholarships		
Virginia L. and Wm. K. Beatty Fund	1,265	
award to Medical Library Association		
William K. Beatty Medical History Fund	1,000	
award to Galter Library at Northwestern		
Chicago Urban Youth Scholarship Fund:	10,000	
8 scholarships		
Bruce E. Mitchell Short Story Fund award at ETHS	600	
Norman W. Thomas, Jr. Scholarship at ETHS:	750	
1 scholarship		
Rose and Andy Thomas Scholarship at ETHS:	1,000	
1 scholarship		
<b>distributions from other funds: \$13,993</b>		
Citizens Lighthouse Community Land Trust	\$ 512	
ETHS Educational Foundation Fund	10,000	
Foster Reading Center Programs		
Child Care Center of Evanston, Roving Reader program	576	
Foster Reading Center program at McGaw YMCA	2,305	
Chuck Remen Memorial Fund to McGaw YMCA	600	



# Reason: to make big plans.

Give back to the community you love! The Daniel Burnham Society recognizes those who earmark estate gifts to the Evanston Community Foundation as a way to posthumously give back to their community by contributing to its future. Join us! Contact [burnham@evanstonforever.org](mailto:burnham@evanstonforever.org).

## Daniel Burnham Society

The Pillars of Evanston

Anonymous  
Elizabeth and Carlyle Anderson\*  
John and Carol Balkcom  
Virginia L. Beatty  
Diane and Karl Berolzheimer  
Lester and LaShawn Blair  
Julie Captain  
Christina and David Cugell  
Natasha Deutsch  
Martha and Donald Farley  
William Friedlander  
Kendal and Ken Gladish  
Joan and Guy Gunzberg  
Kim and Kirk Hoopingarner  
Judy and Bob Kemp  
Ronna Stamm and Paul Lehman  
Margaret and Paul Lurie  
Bonnie and Jay Lytle  
Susan Manning and Doug Doetsch  
Kathy Miller  
Betty A. Papangelis  
Claudette Rasmussen  
Eleanor and William Revelle  
Elizabeth and James Roghair  
Penelope and Toby Sachs  
Sara Schastok  
Ralph Segall  
Mary and James Suhr  
Carolyn J. Sweers  
Edna and Larry Ter Molen  
Faith Vilas\*  
Barbara Goodman and Seth Weinberger  
Linda and Payson Wild  
Marge and John Wold  
Sidney Zwick  
\* deceased

These individuals have pledged to include the Evanston Community Foundation in their estate plans, or have established lifetime planned gifts.

Martha and Donald Farley and Betty Papangelis

Marge and John Wold

# Reason: to build funds for the future.

foundation endowments by fund type



Endowments are the heart of our unique role. Our high concentration of broad-purpose dollars gives us the flexibility to act with vision and purpose.

# Reason: to pool assets.

## 2011 funds of the foundation

### funds for foundation initiatives

**Evanston150 Project 2010**  
Community-wide initiative that engages all of Evanston in imagining the future, resulting in 10 visionary ideas to celebrate Evanston's 150th anniversary in 2013.

**Evanston Climate Action Fund**  
Funds grants for greenhouse gas emission-reduction projects to help Evanston meet the goals of its climate action plan

**Evanston Women's History Project**  
Documents Evanston women's stories and history sites, and provides public access to this history through tourism materials, educational curriculum and leadership programs

**Grantmaking Partners**  
Supplements funds for spring responsive grantmaking. Please see page 15 for a list of grantmaking partners, including Dance Marathon at Northwestern University

**Illinois Early Childhood Fellowship Fund**  
Advances leadership development in the field of early childhood care and education. This is a special project, funded by corporate and private foundation grants; ECF is fiscal sponsor

### board-directed broad purpose funds

**Acorn Fund**  
Encourages activities to test new ideas of value to our community

**All Our Sons**  
Supports boys and young men as they strive to become responsible members of the community

**Arts in Community Fund**  
Strengthens Evanston as an extraordinary arts community

**Balkcom Family Fund**  
Promotes literacy and affordable housing

**Communityworks Fund**  
Identifies and supports systemic approaches to strengthen Evanston in areas of early childhood care and education, land use, and workforce training and development; includes: Pearl & Sander Davis Fund for Communityworks

**Cultural Diversity Initiative**  
Fosters understanding among ethnic and racial groups within early childhood education

**Evanston Realtors Fund**  
Increases annual grant awards—a fund initiated by real estate professionals; with contributing funds from: George Cyrus Memorial Fund

**Leonard Fisher Fund for Nursing Education**  
Funds continuing education for ICU nurses at Highland Park and Lake Forest Hospitals



**Foundation Fund**  
Provides for the Foundation's infrastructure—our own agency fund; includes: Jim Kogen Foundation Spirit Fund  
Gene Lavengood Fund

**Fund for Evanston**  
Meets community needs as they change over time through Foundation grants and programs—the original fund of the Foundation; with contributing funds from: Mr. and Mrs. Carlyle Anderson Fund  
Evanston United Way Fund  
Martha and Donald Farley Fund  
Rees-Servillo/Jan Heffernan Memorial Dinner Fund

**Fund for Women & Girls**  
Empowers women and girls through grants and community education

**Green Communities Fund**  
Encourages area residents to focus attention on environmental preservation and protection, resource conservation and green building

**Leadership Fund**  
Develops individuals' leadership skills in diverse groups through exploration of Evanston assets and challenges; includes: Marybeth Schroeder Fund for Leadership

**Lydia Martin Memorial Fund for Children and the Arts**  
Funds hands-on arts education programs that benefit disadvantaged children and youth

**Lorraine Hairston Morton Fund for Youth**  
Supports organizations and projects to increase employment and educational opportunities for Evanston youth

**Skokie Community Fund 2011**  
For the betterment and welfare of Skokie residents

**Sweers Fund for Children and the Arts**  
Supports arts education for Evanston youth in grades 6 through 12

**Faith Vilas Fund for Youth**  
Provides for programs serving youth

**Literature for All of Us Fund**  
Encourages literature appreciation in youth

**Roycemore School Endowment Fund**  
Provides support for faculty and program-related projects  
Eisner Endowment for Roycemore School  
Supports the faculty and programs at Roycemore School

### donor-designated funds

**Virginia L. and William K. Beatty Volunteer Service Award**  
Recognizes a medical librarian who has demonstrated service to the Medical Library Association and the health sciences library profession

**Beatty Family Scholarship Fund**  
Awards for three college-bound ETHS graduates with interest and achievement in the areas of foreign language, journalism or writing, and science, honoring the children of Virginia L. and William K. Beatty: Carol, Margaret and William B.K. Beatty

**William K. Beatty Medical History Prize**  
Honors outstanding research in the field of medical history

**Chicago Urban Youth Scholarship Fund**  
Tuition assistance to students in programs of Midtown Educational Foundation, Chicago

**Citizens Lighthouse Community Land Trust Fund**  
Supports long-term affordable housing for low to moderate income people in Evanston

**Foster Reading Center Fund**  
Supports this after-school program to increase reading skills and provide readers in home daycare settings

**Susan Willis Heiberger Memorial Garden Fund**  
Maintains the Heiberger memorial garden at ETHS

**Rayna and Marvin Miller Fund for Interfaith Housing Center of the Northern Suburbs**  
Advocates for fair and affordable housing

**Bruce E. Mitchell Short Story Fund 2010**  
Provides an annual award recognizing an outstanding short story by an ETHS junior.

**Chuck Remen Memorial Fund**  
Benefits Project SOAR at the McGaw YMCA

**Norman W. Thomas Jr. Memorial Scholarship**  
Provides college or technical school scholarship assistance to a graduating ETHS senior

**Rose and Andy Thomas Educational Fund**  
Provides scholarship to a graduating ETHS senior who is a first or second generation resident of the USA and/or has an interest in international travel and studies; supports early childhood education and anti-hunger initiatives

### donor-advised funds

Allows donors to recommend grants; similar to, but more economical than a private foundation, and easier to establish

ABS Fund  
B & J Fund  
Edelstein-Berkson Family Fund  
Sally and Richard Ennis Fund 2010  
Friends of the Arts Fund  
Goodman/Weinberger Fund  
Jon Kimmel Memorial Fund  
Lytle Family Fund  
Joe "Butch" Martin Fund  
Partners for the Future Fund 2010  
Mary Lafflin Rockwell Fund  
Weisblat Family Fund 2010  
Zunamon-Cunniiff Family Fund 2011



# Reason: for sound stewardship

## summary of financial data

as of December 2010 and 2009, in thousands

Net Assets	2010	2009
Assets	\$ 14,207	\$ 11,152
Liabilities	(1,581)	(371)
Net assets	\$ 12,626	\$ 10,781

## Revenues

Contributions	\$ 2,355	\$ 1,651
Program revenues	81	72
Investment results	1,392	1,740
Total revenues	\$ 3,828	\$ 3,463

## Expenses

Program services, including grants	\$ 1,721	\$ 1,709
Management and general	141	158
Fundraising	121	128
Total expenses	\$ 1,983	\$ 1,995

## Increase in Net Assets

Revenues in excess of expenses	\$ 1,845	\$ 1,468
--------------------------------	----------	----------

Audited financial statements and Form 990 are available for review at the Foundation office. The Foundation's federal tax identification number is 36-3466802.

## 2010 / 11 highlights

The Foundation received more than \$2.3 million in gifts and grants in 2010 and earned more than \$1.3 million in investment income. Overall, our assets grew 27%, to \$14.2 million at December 31, 2010. Our liabilities increased \$1.2 million due to gifts of \$1.2 million to funds held as agency endowments.

In early 2010 we received a matching gift of \$253,000 from Grand Victoria Foundation, as a result of our ongoing Communityworks relationship. A second matching gift of \$251,600 was received in June 2011. As of September 30, 2011, we have completed the full \$2 million matching challenge.

## 2011 investment performance

In a reprise of our 2010 experience, the financial markets continued to churn in a volatile fashion in the first six months of 2011, reacting to the ongoing "morning after" effect of the downtown of 2007-09. The stock market rose in the first quarter and fell fractionally in the second. Despite worries about the return of inflationary pressures, the bond market generated positive returns. Overall, financial market returns as measured by our *blended benchmark*\* were up 4.82% in the first half. The Foundation's portfolio led the way — by the scantiest of margins — producing a 4.84% return. Our better relative investment results were the product of better selection decisions in our fixed income investments, both domestic and foreign. As we enter the second half of the year, the portfolio is broadly diversified, consistent with our overall investment guidelines.

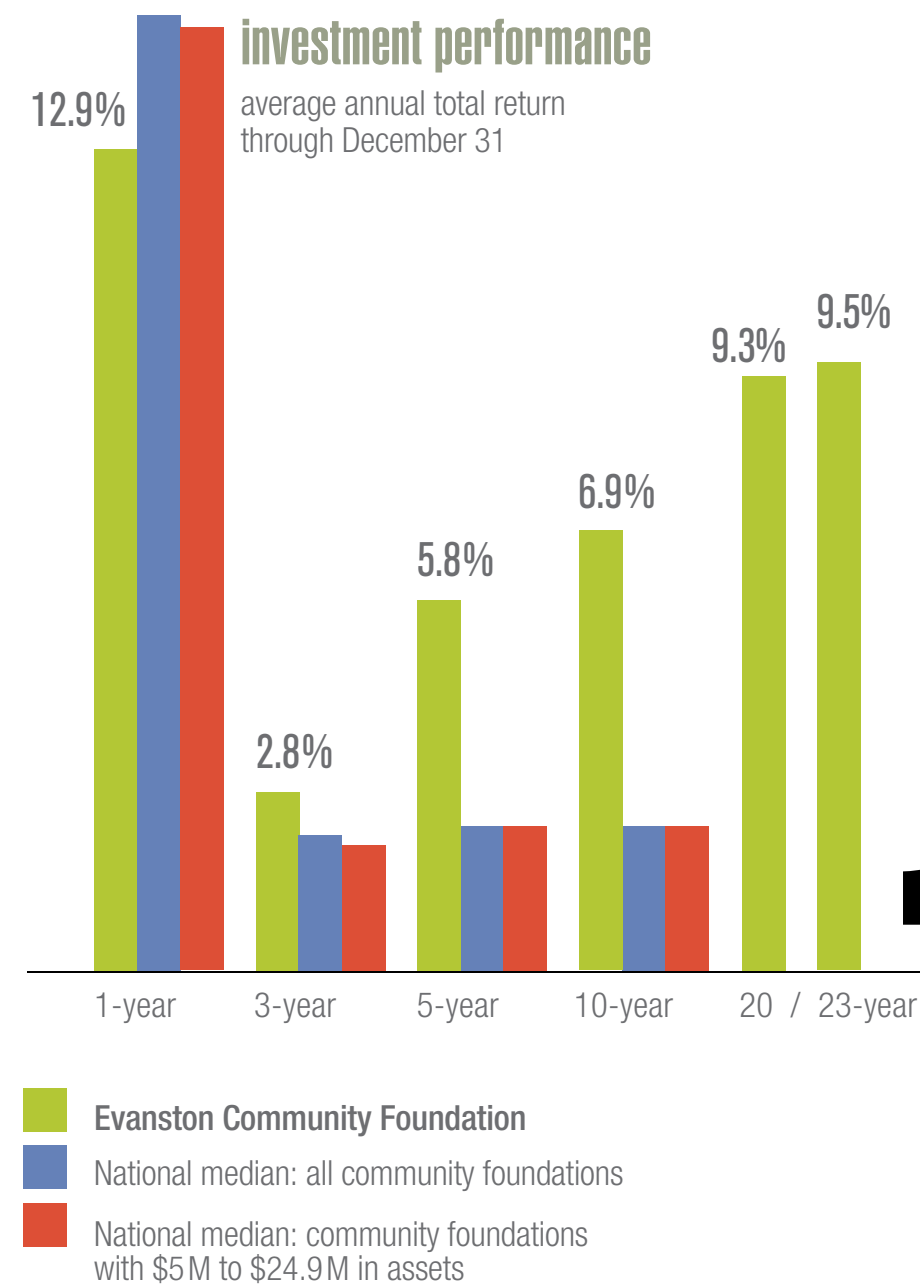
## 2010 results and report of the investment committee

In 2010, the portfolio continued to grow, earning 12.9% and exceeding our *blended benchmark*\* return of 11.9%. As has been the case in the past, the Foundation's investment returns over longer time horizons, which are more relevant to a portfolio of this type, compare favorably with both our benchmark indices and our peers. For the five and ten years ending December 31, 2010, the Foundation earned 5.8% and 6.9%, respectively, on an annual basis, better than both the median return of community foundations as reported by the Council on Foundations (4.4% and 4.5%), and of our blended benchmark (4.7% and 4.8%), for the same periods. More importantly, our five and ten year returns exceeded our annual spending rate of 5%, meaning the portfolio achieved its objective of preserving the purchasing power of its assets and providing a growing stream of income to fund our grants, programs, and operations.

One more comparison is worth noting: the three year return of the Foundation portfolio was 2.8%. One might ask, "Why highlight that figure — it's less than the Foundation's spending rate?" The reason is because the three year period covering 12/31/2007 through 12/31/2010 includes almost all the decline in recent markets, as well as almost all of the ensuing recovery. The *blended benchmark*\*, an indication of overall financial market performance, was up just 0.8% in this period. It is in periods of stress that we can test the durability of our process and approach. While we have no intention of resting on our laurels, we are pleased at the resiliency of the portfolio in this difficult time.

At this juncture, we view the global economy — and the markets, by extension — with a wary eye. The risks of another economic downturn have risen in the past few months, and the issues we must consider comprise a larger list than usual. Accordingly, the investment committee has spread our asset allocation over a broad base. Ultimately, growth opportunities will present themselves. Until that happens, our primary task is to protect capital so that we will be able to take advantage of those opportunities when they finally appear.

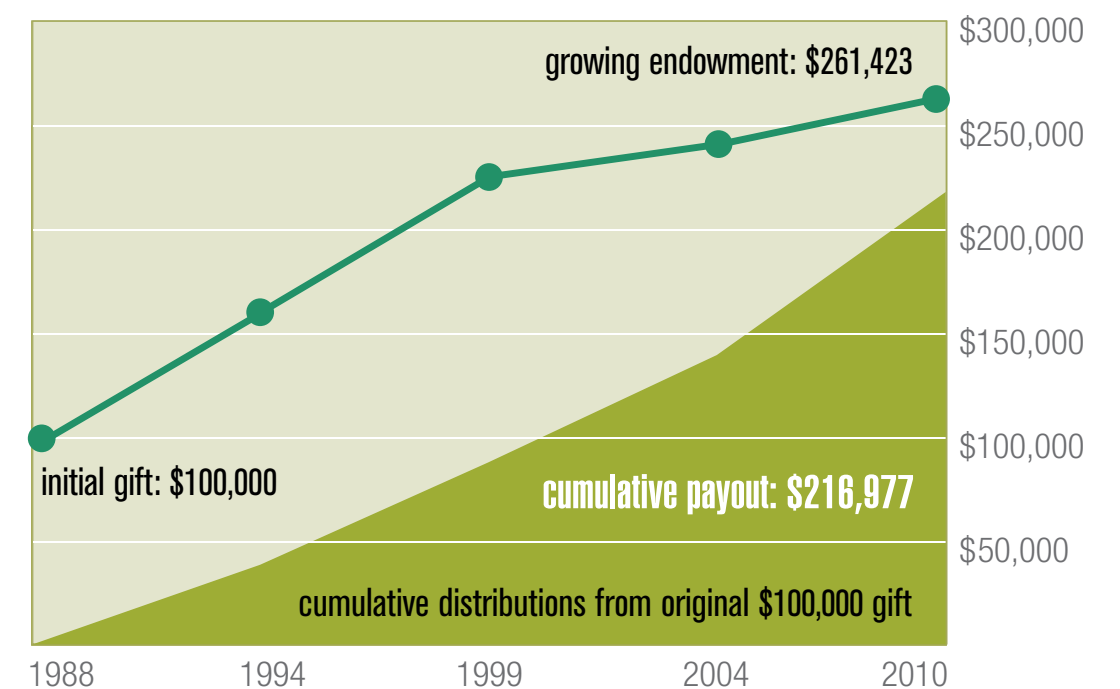
*\*The Foundation's blended benchmark is the weighted average of the market indices used by the investment committee to measure portfolio performance and includes the Wilshire 5000 Index, the MSCI-EFAE Index of international equities, the Barclays Capital Aggregate Bond Index, and the J. P. Morgan Global Bond Index.*



# Reason: to give AND grow.

## a gift to the endowment gives AND grows

Based on actual results, a gift of \$100,000 in 1988 would have funded distributions more than twice the size of the original gift — and would also have left in place a fund that is substantially more than twice the size of the original gift.



## Evanston Community Foundation investment committee

**Ralph Segall, chair**  
Managing Director,  
Segall, Bryant & Hamill  
former Foundation chair

**Ann Adams**  
Associate Vice President  
of Research,  
Northwestern University  
Foundation board member

**Karl Berolzheimer**  
Retired Attorney and Bank Director  
former Foundation chair

**Diana Cohen**  
Community Volunteer  
Foundation board member

**William Goldstein**  
Founder & President,  
Lodestar Investment Counsel

**John McCarthy**  
Chief Investment Officer,  
Centaur Capital Partners  
Foundation treasurer

**Mark McCarville**  
Partner, Braydon Partners  
former Foundation board member

**Kevin Mott**  
Financial Advisor, Edward Jones  
Foundation board member

**Penelope Sachs**  
Community Volunteer  
Foundation chair

**Ingrid Stafford**  
Associate VP for Financial  
Operations and Treasurer,  
Northwestern University  
former Foundation board member

**Hugh Williams**  
President and CEO, Continental  
Painting and Decorating  
Foundation board member

Good investment results are the product of five "P's" all coming together: enthusiastic People following a well-defined Philosophy with consistent Practices can produce good investment Performance. The fifth P—at a low Price—is achieved by our committee members, all of whom are volunteers.

# 19

**Reason:**  
so you can put your money  
where your heart is.

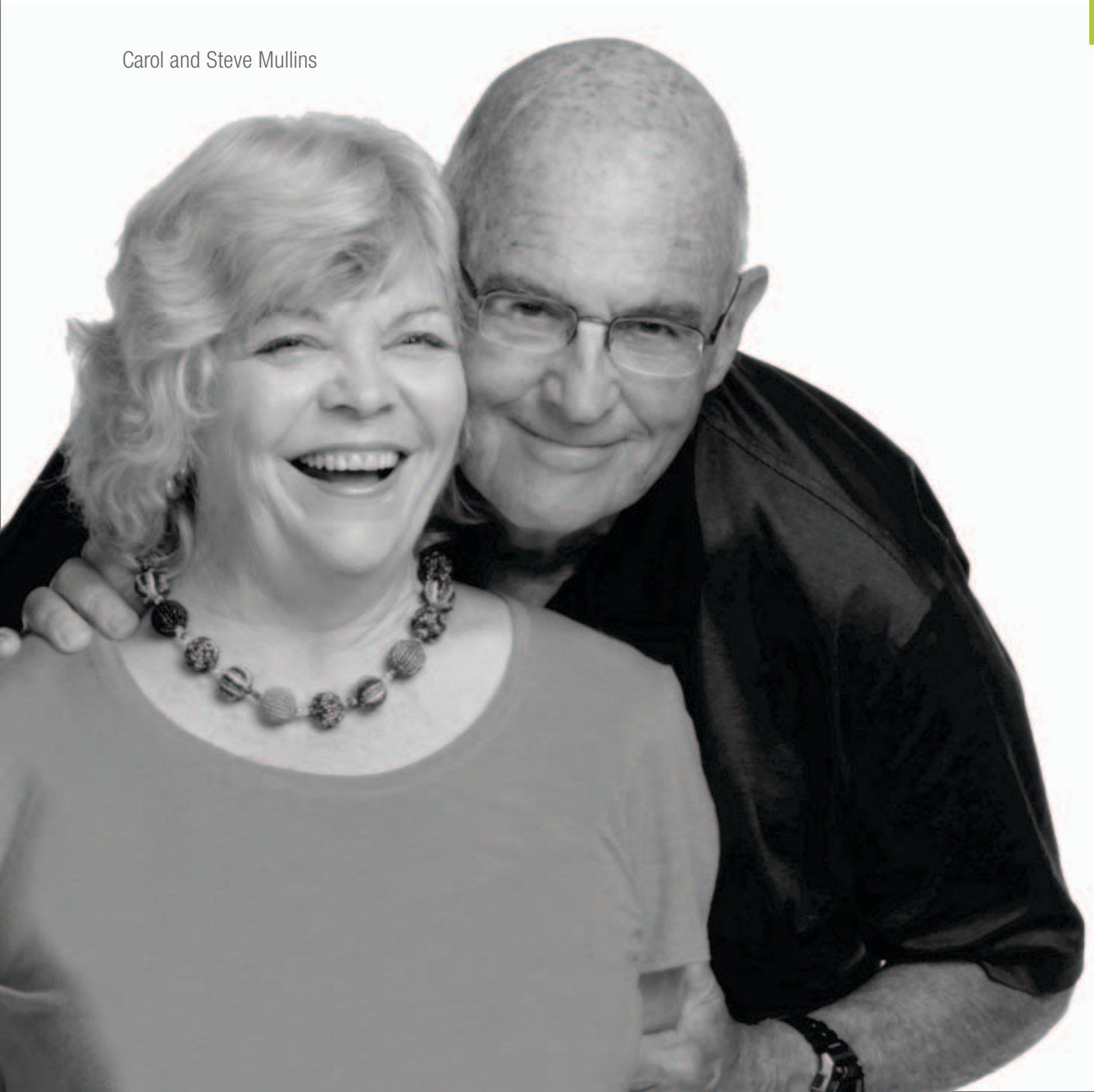
**From the start.** A civic leader like Carol Mullins has many demands on her time and resources. Among other things, Mullins chairs the Evanston Commission on Aging, sits on the advisory committee of the Childcare Network, and has been president of the District 202 school board.

But a lot of her energy has gone into the work described in these pages. She helped start Leadership Evanston (see page 3) and was its first director. She's on the advisory board of Housing Options (see page 1). And this year she and her husband Steve made a substantial gift to the Foundation's Communityworks fund (see page 2), to support the vision "Every child ready for kindergarten, Every youth ready for work."

**The biggest bang for my buck.** "For a long time I was an early childhood social worker," says Mullins. "I really do believe that if you invest \$1 in early childhood, you get \$7 in return. By investing in the Foundation's *Every Child* initiative, I thought I could get the biggest bang for my buck, because it would help all kinds of kids." Grand Victoria Foundation's offer to match contributions dollar for dollar made the appeal even more attractive.

"I think the Foundation does a wonderful job generally, but early childhood is my passion, so I decided to put the money there." She's helped us go a long way toward making our Grand Victoria match — and even more important, helped us build Evanston's future by investing in our leaders, our organizations — and our children.

Carol and Steve Mullins



# 20

**Reason:**  
to be a vessel  
for enduring philanthropy.

# 21

**Reason:**  
to honor your  
spirit of giving.

**thank you.**

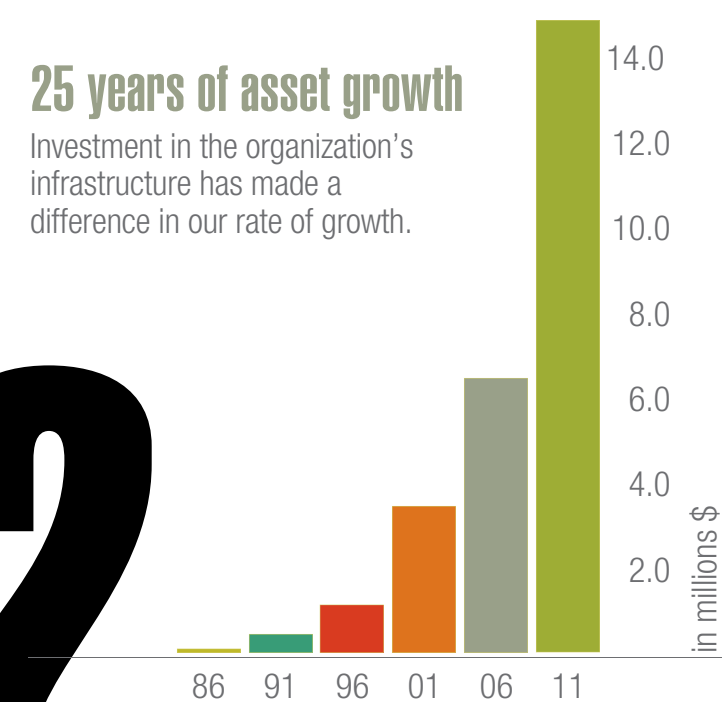
It cannot be more simply said: we are here because of our donors — in fact, we thrive because of you.

We extend our heartfelt gratitude to you for giving this past year, in tough times. We honor your spirit of giving.

Your trust inspires our work.

## 25 years of asset growth

Investment in the organization's infrastructure has made a difference in our rate of growth.



# 22

**Reason:**  
to give more to Evanston.



# Reason: for great governance to ensure Evanston's future.

The Board — committed and even-handed individuals willing to share their experience, wisdom and love of community. A group also able to embrace the Foundation's long-term horizon but dedicated to making Evanston a more vibrant, inclusive and just community *today*.



## leadership of the foundation

### foundation board of directors

Penelope Sachs, chair  
Ann K. Adams <sup>1</sup>  
Judith Aiello-Fantus, secretary  
Lisa Altenbernd <sup>1</sup>  
Lun Ye "Lonnie" Crim Barefield  
Michael Brody  
Julie Chernoff <sup>2</sup>  
Julie Chernoff <sup>2</sup>  
Diana Cohen  
Marvin R. Cohen  
Mary Finnegan  
Kendal Gladish <sup>3</sup>  
Joan Gunzberg, vice chair  
Burgwell Howard  
Judy Kemp, past chair  
Lucile Krasnow <sup>3</sup>  
Bill Logan  
John McCarthy, treasurer  
Kevin Mott  
Anne Murdoch <sup>1</sup>  
Richard Peach  
Kim Perutz  
Shabnum Sanghvi  
Keith Sarpolis, MD <sup>1</sup>  
Ronna Stamm, vice chair  
Hugh Williams <sup>1</sup>

<sup>1</sup> Joined in May 2011  
<sup>2</sup> Joined in September 2010  
<sup>3</sup> Completed term in May 2011

### leadership network

John Balkcom  
Ann Mammel Balusek  
Karl Berolzheimer  
Mary Anne Cappo  
Natalia Deutsch  
Paul J. Finnegan  
Joseph P. Flanagan  
Kendal Gladish  
William Goldstein  
Kirk Hoopingarner  
Ken Lehman  
Charles A. Lewis  
Jay Lytle  
Mark J. McCarville  
Lorraine H. Morton  
Eleanor Revelle  
Elizabeth Roghair  
Ralph Segall  
Ingrid Stafford  
Larry Ter Molen  
The Hon. Elizabeth Tisdahl

### alumni council

John Allen  
Frederic Artwick  
Carol Balkcom  
Sylvia Bateman  
Lester Blair  
William Breen  
Betty Brugger  
Bill Campbell  
John Chapman  
Compton Chase-Lansdale  
Joy Creamer

Deb Danson  
Beth Davis  
James Davis  
Ken Davis  
Lorenzo Dawson  
Rosanne Dineen  
Jerry Donohue  
Sue Durburg  
Jeffrey Emrich  
Betsy Engelman  
Maria Felcher  
William Friedlander  
Carolyn De Swarte Gifford  
Sandy Gross  
Joseph Hagee  
Carol Henes  
James Hoel  
Ernest Jacobi  
Judith Jobbitt  
Rose Johnson  
Stephanie Kaplan  
James Kauffman  
Esther Klatz  
James Kogen\*\*  
Sharon Kornlofske  
Lucile Krasnow  
Iris Krieg  
Duanne Kulberg  
Maxine Lange  
Lawrence Lavengood\*\*  
Kenneth Lehman  
Dolores Leone  
Marcia Lipetz  
Dorothy Lloyd Still  
Jay Lytle  
Susan Manning  
Claire McCarthy Peterson

Mark McCarville  
Mark Miller  
John Morris  
Lynette Murphy  
Betty Papangelis  
Bob Parris  
Michael Phillips\*\*  
Rodney Quainton  
John Rapisarda  
Elizabeth Roghair  
Richard Romano  
L. Dean Scane  
George Simon  
William Smith  
Stacy Sochacki  
Thomas Stonecipher  
James Suhr  
Thomas Terry  
Decature D. Tounsel, Sr.  
Thomas Valenti  
Edgar Vanneman  
Shirli Vanneman  
Ernest Vasseur  
Faith Vilas\*\*  
David Wagner  
Sarah Wagner  
Seth Weinberger  
Payson Wild  
Diane Williams  
Jerry Williams  
Stephen Wilson  
Arnold Winfield  
Ray Winninger  
Arthur Winter  
\*\*deceased

### community representatives on board and advisory committees

#### 25th Anniversary

Patty Barbato  
Karl Berolzheimer  
Peter Braithwaite  
Colleen Chappelle  
Carolyn Dellutri  
Natalia Deutsch  
Norah Diedrich  
Jane Grover  
Liz Krupkin  
Gretchen Livingston  
Jane McCarthy  
Brian Miller  
Lynette Murphy  
Angelique Richard  
Brooke Saucier  
Loyce Spells  
Mary Trujillo

#### All Our Sons

Sol Anderson  
Don Baker  
Dayna Block  
Christie Chandler-Stahl  
Jarrett Dapier  
Dave Edelstein  
Sarah Gross  
Jim Iberg  
Kate Mahoney  
Art Mollenhauer  
Naria Santa Lucia  
Brian Williams

### Audit

Ingrid Stafford

### Climate Action Advisory Committee

Susan Besson  
Ellen Galland  
Steve Perkins  
Eleanor Revelle  
Sara Schastok

### Development

Karl Berolzheimer  
Larry Ter Molen  
Seth Weinberger  
Payson Wild

### Grantmaking

Lisa Altenbernd  
Katrina Miksis  
Reggie Ollie  
Julie Sher  
Jack Snarr  
Ellen Wagner

### Investment

Ralph Segall, chair  
Karl Berolzheimer  
Bill Goldstein  
Mark McCarville  
Ingrid Stafford

### Communityworks Advisory Committee

Paul Finnegan, chair  
Joseph P. Flanagan  
Carol Henes  
Ken Lehman  
Diane Lupke  
Jay Lytle  
Mark McCarville  
Peter Morris  
Susan Munro, consultant  
Bob Reece  
Ingrid Stafford

### Leadership Evanston Steering Committee

Anne Murdoch, chair  
Tom Altman <sup>1</sup>  
Keith Banks <sup>2</sup>  
Leslie Brown  
Vickie Burke <sup>1</sup>  
Bridget Calendo  
R.J. Coleman  
Rich Emrich <sup>2</sup>  
Bill Geiger <sup>2</sup>  
Margaret Gergen <sup>1</sup>  
Vidette Bullock Mixon  
Fr. Robert Oldershaw  
Monique Parsons <sup>1</sup>  
Richard Peach, past chair  
Bart Rocca  
Shabnum Sanghvi <sup>2</sup>  
Rev. Warren Smith <sup>1</sup>  
Cynthia Witherspoon  
Judy Witt, vice chair

<sup>1</sup> Joined in June 2011  
<sup>2</sup> Completed term in June 2011

### Leadership Evanston Advisory Committee

Paul Arntson  
Sue Brady  
Natalia Deutsch  
Helen Gagel  
Carol Henes  
Delores Holmes  
Maxine Lange  
Jay Lytle  
Lorraine Morton  
Betty A. Papangelis  
Claire McCarthy Peterson  
Eleanor Revelle  
Ingrid Stafford  
Robert Teska

### root2fruit Advisory Board

Ann Mammel Balusek  
Peter Braithwaite <sup>1</sup>  
Helen Hilken  
Matthew Moy Johnson  
Joi-Anissa Russell  
Karen Singer

<sup>1</sup> Completed term in June 2011

### evanston community foundation staff

Sara Schastok, Ph.D.  
President and CEO

Marybeth Schroeder  
Senior Program Officer

Jan Fischer  
Finance Manager

Jeremy Barrows  
Director of Development and Communications

Cheryl Bondy Kaplan  
Program Officer  
through July 2011

Amy Monday  
Assistant Director of Administration and Development

Beth Osterlund  
Assistant Director of Leadership Evanston

Find us at:  
[www.evanstonforever.org](http://www.evanstonforever.org)

Foundation Staff:  
**847.492.0990**

writing: Mary O'Connell, Jeremy Barrows  
concept / design: chrismer+mardock  
communication design  
photography: William Burlingham

On the cover: Rick Ferguson,  
Macy Hoeseler, David Hernandez,  
Kaleigh Rolls, Peter Braithwaite  
and Debbie Bretag.

### leadership of the foundation

Julie Chernoff, Judith Aiello-Fantus, Hugh Williams, Penelope Sachs, Keith Sarpolis, Anne Murdoch, Sara Schastok (President and CEO), Lisa Altenbernd, Judy Kemp, Richard Peach, Burgwell Howard, Michael Brody, Joan Gunzberg, Shabnum Sanghvi, John McCarthy, Ronna Stamm, Bill Logan, Lun Ye Crim Barefield, Kim Perutz, Diana Cohen, Marvin R. Cohen, Kevin Mott, Mary Finnegan, Julie Captain



Reason:  
**we are here for  
Evanston!**

Twenty-five years in, the Evanston Community Foundation can point with pride to many accomplishments. The community's investments in the Foundation have created an institution that amplifies those resources and makes effective investments back into the community.

**But we are just getting started.**

Today the foundation stands at the intersection of Evanston's nonprofit and philanthropic life. We're a grantmaker, an agenda-setter, an agent of change. To give just one example, we have increased by 50% the number of vulnerable families who receive life-changing home visiting services in their children's earliest years. That's impact.

Where will Evanston want to go in the decades ahead to fulfill its best visions of itself? We're ready to listen and lead the way.

25